

5 NIGHT CRUISE



# Kvarner Bay of Islands

MINI ONE WAY (KL1) CRUISE



Zadar - Opatija 2020  
Guaranteed departures

Cruising with motor ships along the magnificent Kvarner Bay of islands on the route:  
ZADAR – MOLAT or OLIB – (Ilovik) LOŠINJ – CRES – OPATIJA

For this trip all you will need is a few T-shirts and a swimming costume to spend 6 unforgettable days cruising on the northern Adriatic Sea from one island to another. Relax and let the captain and his crew (especially the chef) take care of you. During the day you can swim, snorkel, sunbathe, and explore the underworld of the Adriatic Sea. Evenings are at leisure to find a good restaurant or discover old churches or other historical monuments...

## FEATURED SHIPS



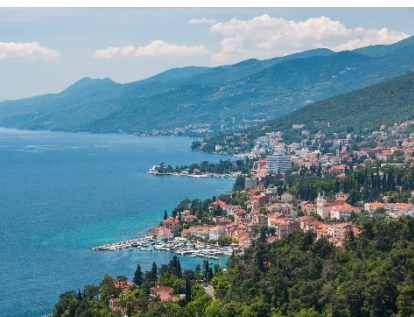
Premium  
MV MORENA  
or similar



Traditional  
Ensuite  
MV Dalmatinka  
or similar







## Monday ZADAR

Check-in at Zadar port at 17:00h. Free time or optional sightseeing of Zadar (starting at 17:30h and included in Premium & Premium Superior category), rich in monumental heritage of world importance visible on every step. The Roman forum dated to the 1st century AD, the church of St. Donatus dated to the 9th century AD – the most famous Medieval basilica and the symbol of the city, the mighty city walls with representative Port and Land gates from the 16th century AD, and numerous palaces, villas. The town is full of great restaurants packed in the centre. Of special interest are the famous Zadar Sea Organs, one of a kind in the world and “The Greeting to the Sun” light installation. Overnight on board.

## Tuesday ZADAR - MOLAT ISLAND or OLIB (B, L, CD)

Early departure for Molat or Olib island (depending on available space in the small harbours). Both islands are situated in the northern part of Zadar's archipelago where one can enjoy peace and serenity. Captain's dinner party on board and overnight.

## Wednesday MOLAT ISLAND or OLIB - ILOVIK - LOŠINJ ISLAND (B, L)

After breakfast and morning swim, cruise towards Ilovik, the island of flowers for a short stop before departing for Lošinj island, one of the most popular islands on the northern Adriatic due to the abundance of pine trees and clear waters. Mali Lošinj is known as the “sunshine island”. On arrival take a walk along the harbor or walk up to the Lošinj Aromatic Garden or simply visit nearby, picturesque, town of Veli Lošinj. Overnight in Mali Lošinj.

## Thursday LOŠINJ ISLAND - CRES ISLAND (B, L)

After a morning swim leave for Cres island, a long and narrow island covered with oak, beech and pine forests as well as vineyards and olive tree plantations. Cres and Mali Lošinj used to be one island but a channel dug by the Romans separated them. Spend the night in the harbour of this typical medieval town Cres.

## Friday CRES ISLAND – OPATIJA (B, L)

After breakfast we leave for Opatija. On route we can experience the spectacular views of famous Opatija Riviera. Late afternoon arrival to Opatija for a stroll along the famous Franz Joseph promenade – Lungo Mare to the numerous cafes and restaurants in Opatija or nearby fishermen's village Volosko – well known for excellent seafood restaurants, the best in the region, as well as among the best in Croatia. For your last night on board we recommend a farewell party on the ship, a great opportunity for exchanging addresses with other passengers who have by now become your new friends.

## Saturday OPATIJA (B)

After breakfast say goodbye to the crew and hope to see you again aboard Katarina Line cruises.

**Legend:** B – breakfast, L – lunch, CD – Captain's dinner





# DATES & PRICES 2020:

Departures - Zadar harbour:  
One way departures every Monday / check in from 17:00  
**PRICE PER PERSON IN EUR**  
5 nights/6 days with breakfasts & 3 course lunches + a liter of water daily  
- first service is breakfast on Tuesday, last service is breakfast on Saturday)  
**LIMITED AVAILABILITY!**

A	B	C	D	E	F
Sep 30; Oct 07, 14	May 06, 13, 20, 27	Jun 03, 10 Sep 23	Jun 17; Sep 02, 09, 16;	Jun 24; Aug 19, 26;	Jul 01; Jul 08, 15, 22, 29; Aug 05, 12

## (KL1) Mini One Way Cruise from Zadar

PREMIUM SUPERIOR <b>UPPER/MAIN DECK</b>	585	740	800	895	960	995
PREMIUM SUPERIOR <b>LOWER DECK</b>	558	700	735	830	895	920
PREMIUM <b>UPPER/MAIN DECK</b>	585	645	700	780	835	865
PREMIUM <b>LOWER DECK</b>	558	610	640	725	780	800
TRADITIONAL ENSUITE <b>UPPER/MAIN DECK</b>	410	460	520	605	650	675
TRADITIONAL ENSUITE <b>LOWER DECK</b>	385	430	460	555	605	630

## OBLIGATORY SUPPLEMENT

**VISITOR'S TAX & PORT FEES** To be paid on the spot: **EUR 30.** - per person per cruise

## SHIP CABIN TYPE DESCRIPTIONS

**UPPER/MAIN DECK CABINS ARE ALLOCATED ACCORDING TO AVAILABILITY! Lower deck cabins are in the hull of the ship below the main deck.**

PREMIUM SUPERIOR	Premium superior vessels are recently built mini deluxe vessels featuring similar comfort, but are smaller in size – 38 to 41m in length. Air-conditioned cabins are 8 to 14m <sup>2</sup> in size with double or twin beds, hair dryer and safety deposit box. <b>Included services:</b> Buffet breakfasts, three course lunches, Captain's dinner, English speaking tour manager on board, two guided tours of Zadar and Opatija, daily cabin service, luggage handling, afternoon tea and coffee with biscuits, free WIFI.
PREMIUM	Premium steel hulled vessels with modern traditional look offer accommodation in air-conditioned, spacious en-suite cabins with double or twin beds, hair dryer and safety deposit box. Ships are from 29 to 35m in length with cabins 8 to 14m <sup>2</sup> in size. <b>Included services:</b> buffet breakfasts, three course lunches, Captain's dinner, guided tours of Zadar and Opatija, daily cabin service, luggage handling, afternoon tea and coffee with biscuits, free Wifi.
TRADITIONAL ENSUITE	Wooden ships, cabins with private shower/toilet, mostly bunk beds, air-conditioned salon. <b>Included services:</b> Continental breakfasts, three course lunches, a liter of water per person daily, free WIFI.

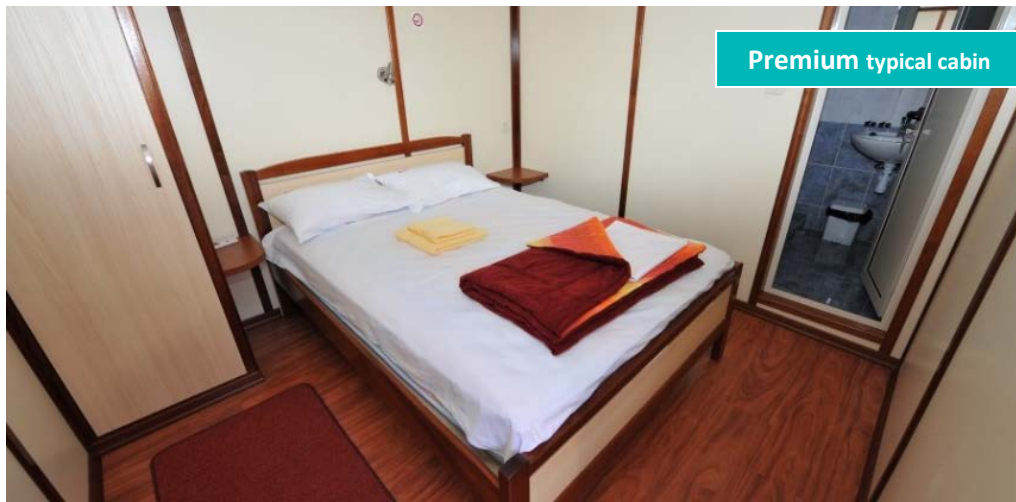
## REDUCTIONS & SUPPLEMENTS

Triple Share Cabin	Adults on 3rd bed in a triple cabin – 30%
Child Discount	Children under 10 years – 50%
Single Use Cabin	50% surcharge on twin share price. Excludes low season departures Apr 15,22,29; Sep 30, Oct 07, 14; In other seasons avoid by sharing. <b>(limited number of single cabins without supplement available)</b>

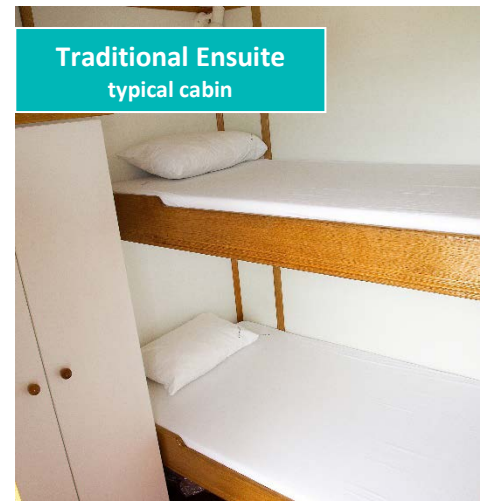
## OPTIONAL SUPPLEMENTS (nett)

Dinner supplement	<b>EUR 85.-</b> per person/cruise, min. 10 pax required.
Parking	Possible from <b>EUR 10.-15-</b> daily
Airport transfers	Various airport possibilities (Rijeka, Pula, Zagreb, Trieste, Ljubljana, Venice) – price on request; <b>FREE OF CHARGE</b> local transfers for KL1 route (from Opatija hotels to Opatija port)
Wedding renewal or other occasional / special day celebration package	<b>EUR 150.-</b> per couple – includes renewal ceremony performed by the captain, certificate, champagne, gift
Baby chair or baby cot rental	<b>EUR 50.-</b> per cruise (to be paid on the spot)
Pre/post cruise accommodation	Available on request - villas, hotels, private accommodation, hostels...
Ferry Tickets	Cabins, seats or deck, available for coastal & international ferry connections
Parking	Possible from <b>EUR 10.-15-</b> daily
<i>Applies to Traditional Ensuite vessels only:</i> English breakfast supplement	<b>EUR 30.-</b> per cruise - incl. 2 eggs, bacon, tomato and mushrooms, or fruit & yoghurt, or similar (regular continental breakfast included in price of the cruise includes: coffee, tea, milk, glass of juice, cereal, bread, a variety of spreads - butter, honey, jam, soft cheese; daily additions such as ham and cheese or boiled eggs, frankfurters, salami etc.).
Captain's dinner	<b>EUR 25.-</b> choice of fish or meat menu - ship's speciality served (included in price on Premium vessels)
Extra towels	The guests will be provided with two towels for personal use per cruise. Extra towels can be rented for <b>EUR 3.-</b> & beach towels <b>EUR 5.-</b> per cruise/towel. Katarina Line beach towel can be purchased on arrival for <b>EUR 10.-</b>
Daily cabin cleaning	<b>EUR 11.-</b> per person per cruise - included in the price for Premium vessels, not provided on Traditional Ensuite vessels but can be ordered in advance





Premium typical cabin



Traditional Ensuite typical cabin

## OPTIONAL EXCURSIONS

### PLITVICE LAKES FROM OPATIJA Full day EUR 64.-

Visit the famous Plitvice Lakes, sixteen lakes with crystal clear water connected by magnificent waterfalls. Pure nature, mountain forests and fresh air. One of the most beautiful national parks in Croatia, and a UNESCO site. A full day tour, starting early in the morning and returning just in time for dinner.

**Included:** Coach transfer, guide, entrance to the park with boat and train ride in the park. **Recommended:** Comfortable walking shoes

**Departure:** 07:30h **Return:** 19:00h

### VENICE FROM OPATIJA Full day EUR 74.-

Visit Venice, one of the most unique cities in the world. Take a walk along picturesque bridges and a gondola ride or just sip a Bellini cocktail at St. Mark's square.

**Included:** Transfer from Opatija to Rovinj or Poreč, 3 hour ship transfer to Venice, guided walking tour

**Recommended:** Comfortable walking shoes, passport required for NON-EU Residents only

**Departure:** 06:00h **Return:** 22:00h

### Optional sightseeing in following town (min 10 pax required):

Zadar, Opatija - **EUR 10,-** per person per tour; Premium ships have Zadar tour included in the price; Premium Superior ships have Zadar & Opatija tour included in the price.

#### Payment:

- \* Advance payment EUR 150 per person
- \* Reminder latest one month prior to arrival

#### Special notes:

- \* The Captain reserves the right in changing the route in case of bad weather conditions
- \* All Katarina Line cruise departures are guaranteed, however if less than 10 participants are booked, Katarina line reserves the right in cancelling the departure and changing the ship name if the need arises.
- \* Guests are obliged to follow the ship rules and regulations found in written form onboard especially in regards to bringing drinks on board.
- \* In case of inappropriate behavior Katarina Line/captain reserves the right in asking clients to disembark

#### Cancellation policy:

- \* From the day of confirmation up till 30 days prior to arrival – advance payment (EUR 150 per person) - **non-refundable**
- \* 29-22 days – 25% of the remaining balance
- \* 21-15 days – 50% of the remaining balance
- \* 14-0 days – 100% fee
- \* Name change / date change fee – EUR 20 per person

Katarina line highly recommends clients to take insurance against cancellation of reserved services! Katarina line offers a complete travel insurance package (travel health insurance, personal accident insurance, private liability, luggage insurance & trip cancellation).

Due specific mooring conditions and requirements in some Croatian ports, Katarina Line ships are moored side by side, making it necessary for the clients to cross from one ship to another with gaps in between ships in order to get to the shore. In such cases clients need to take special care when crossing and do this at their own risk. Crew assistance will be given to those needing and requesting it. **Cruise not recommended for clients in wheelchairs or with limited mobility.**

Katarina Line and the captain of the vessel reserve the right to change and modify the route due to weather conditions as well as conditions in the ports visited. The order of visits may be different than published in case of ports being overly crowded and too busy and with the intention to give the customer a better experience overall.

## Tour Adria

Segerlinds 6

416 53 Göteborg  
info@touradria.se  
Tel: +46 (0)31 79140

I samarbete med

